

ESCALE

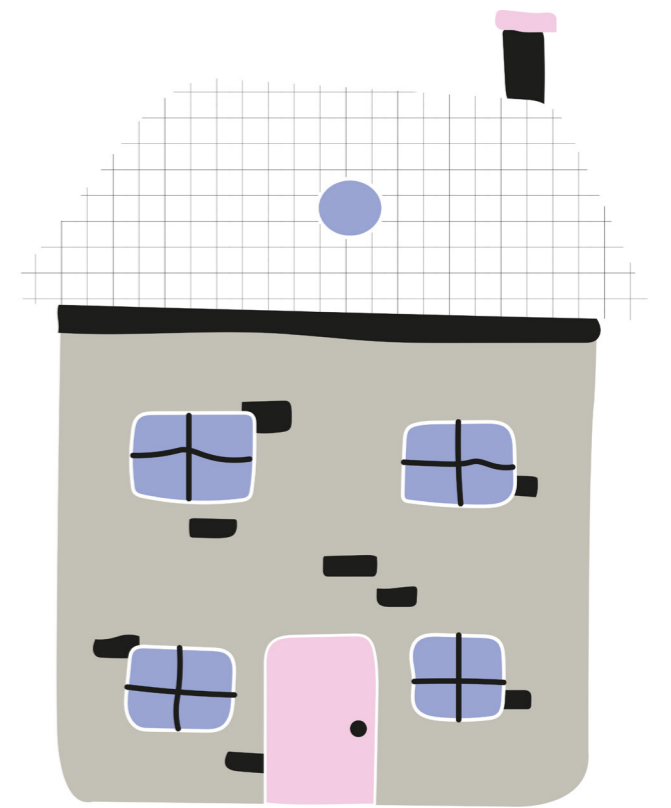
SONORITÉS URBAINES

INTENTION

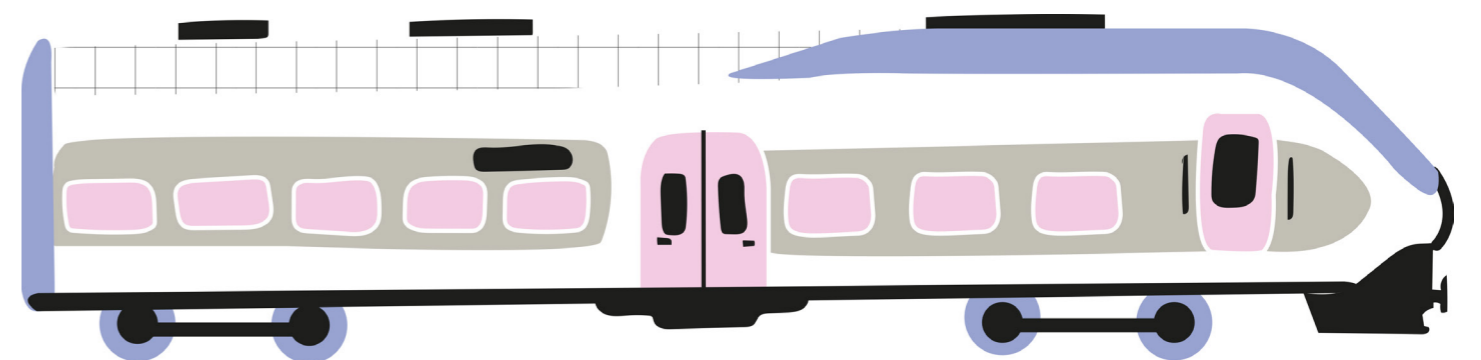
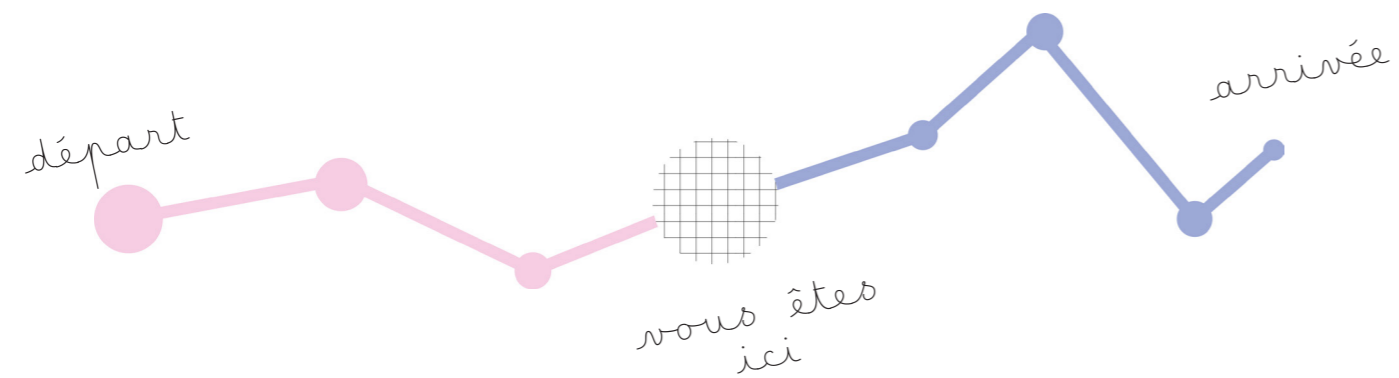
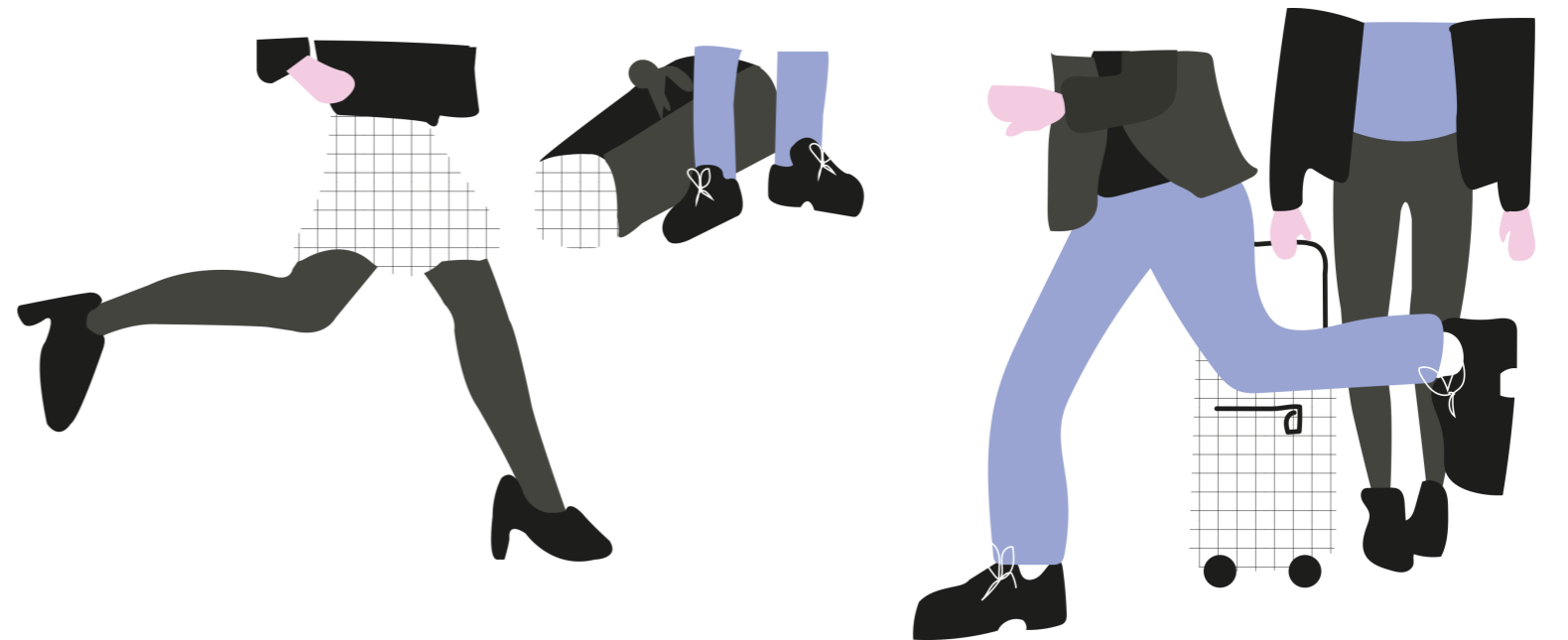
PROPOSER UNE AMBIANCE
VISUELLE APAISANTE,
DANS UN ESPACE
AGITÉ ET BRUYANT.



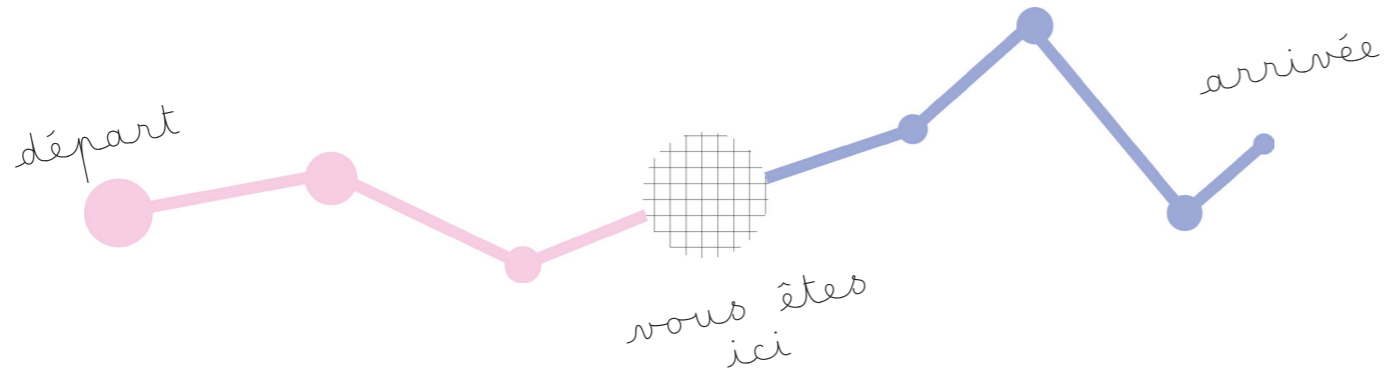
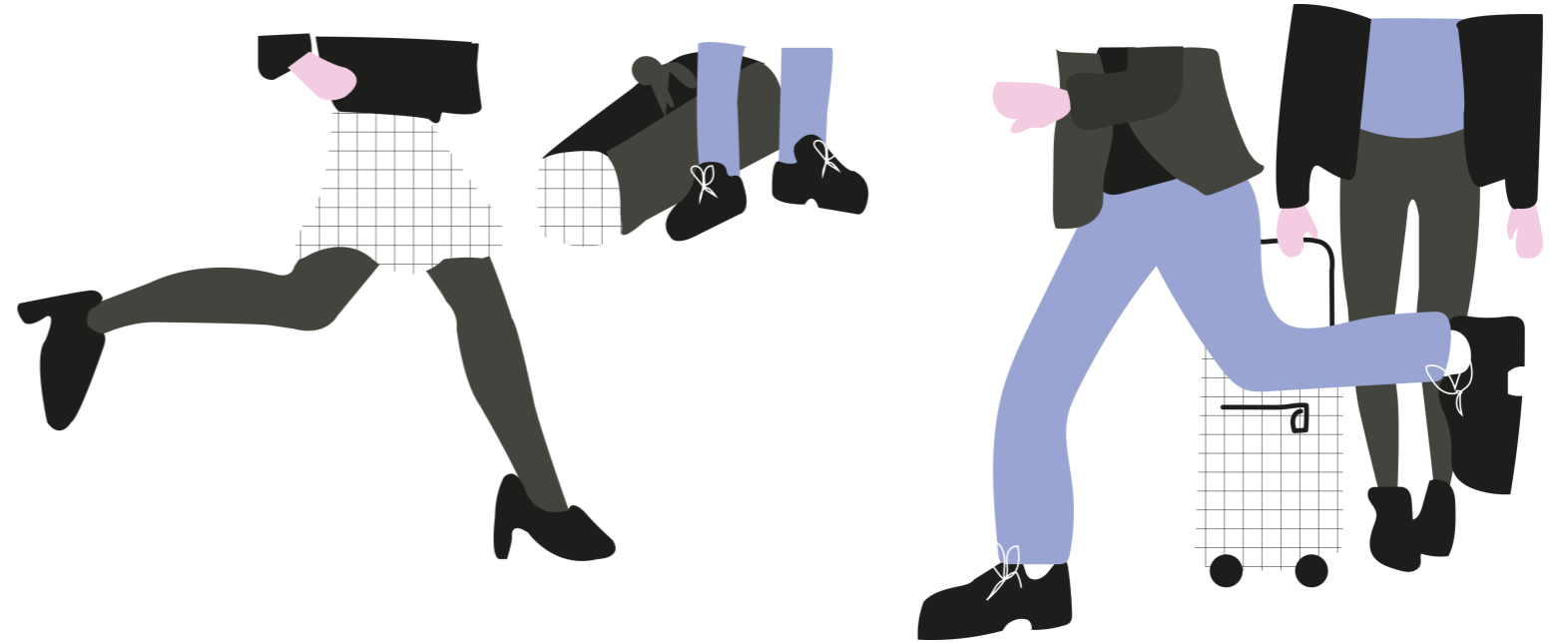
SCÉNARIO 1



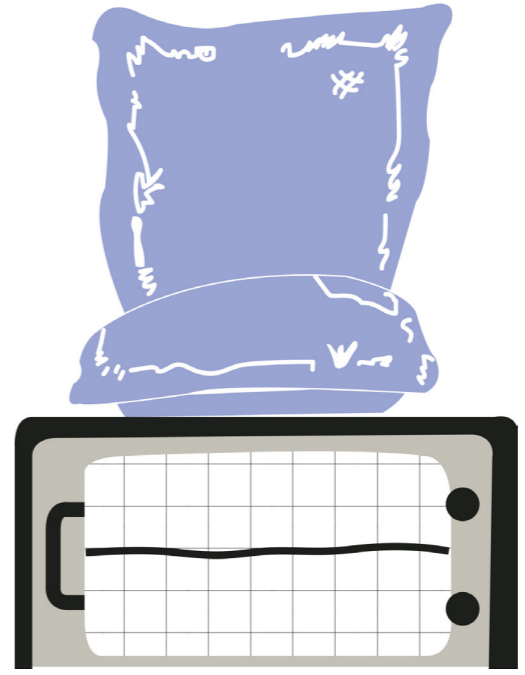
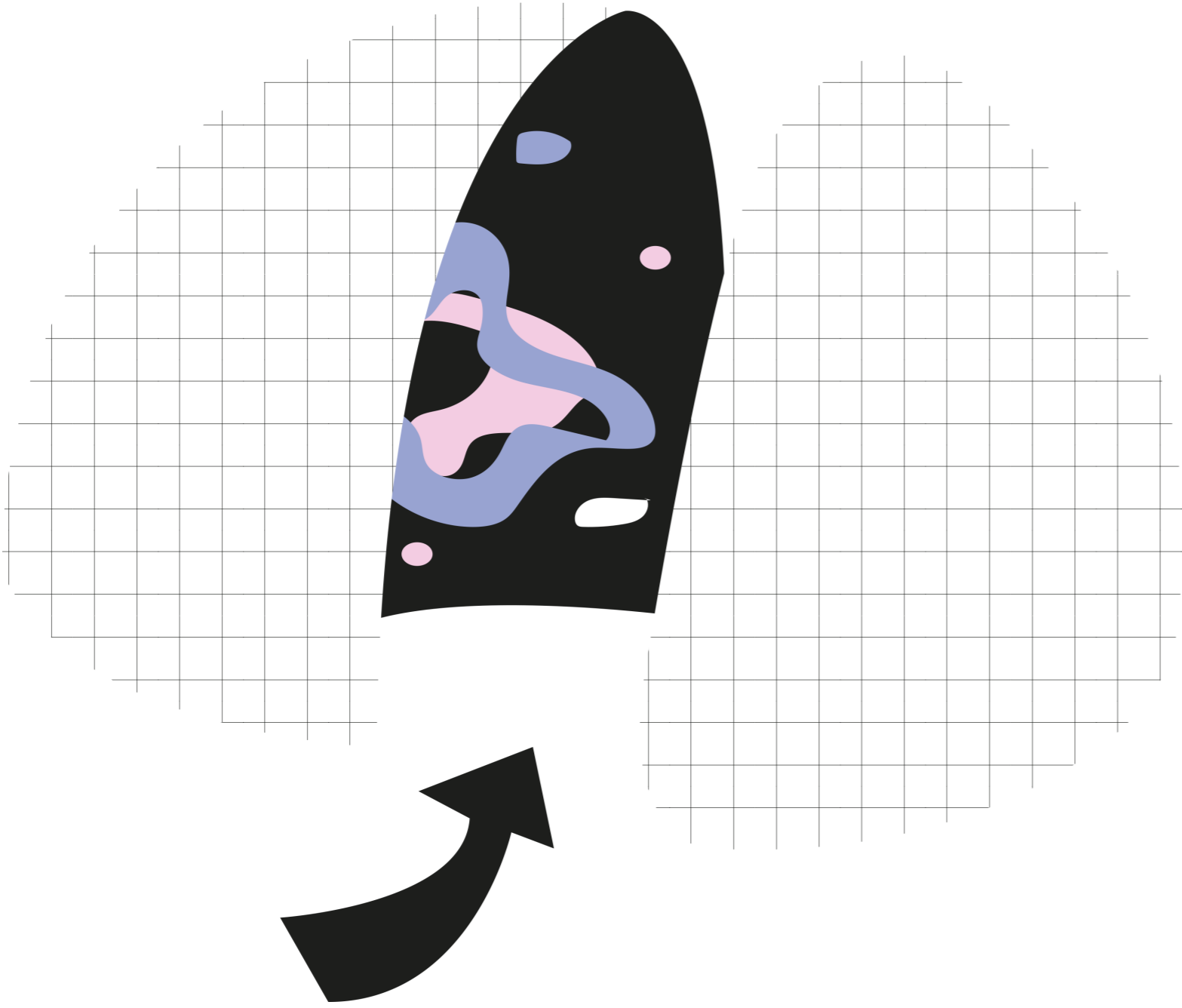
SCÉNARIO 2



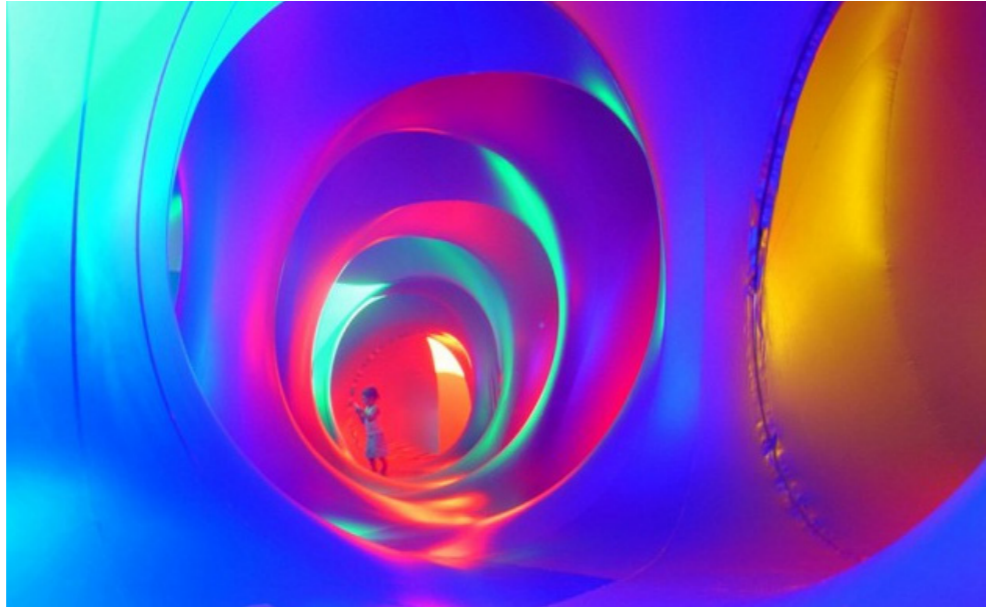
SCÉNARIO 3



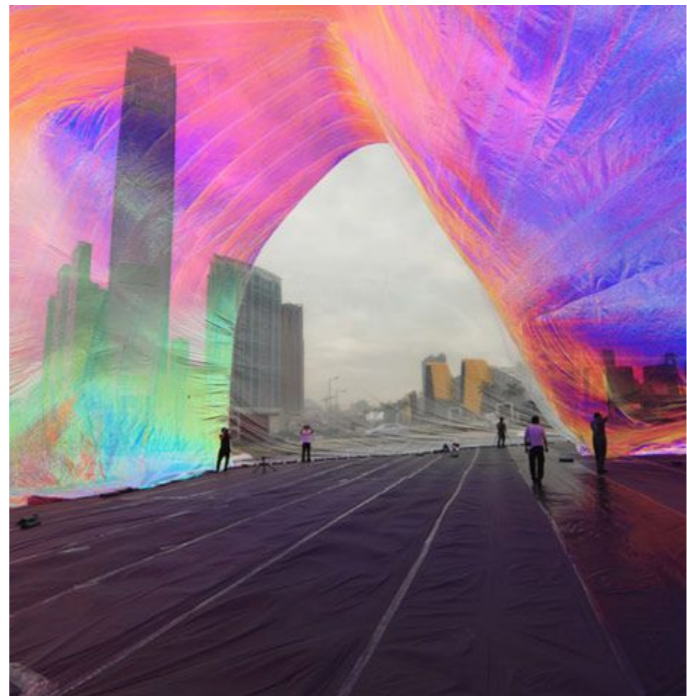
SCÉNARIO 3



INFLUENCES



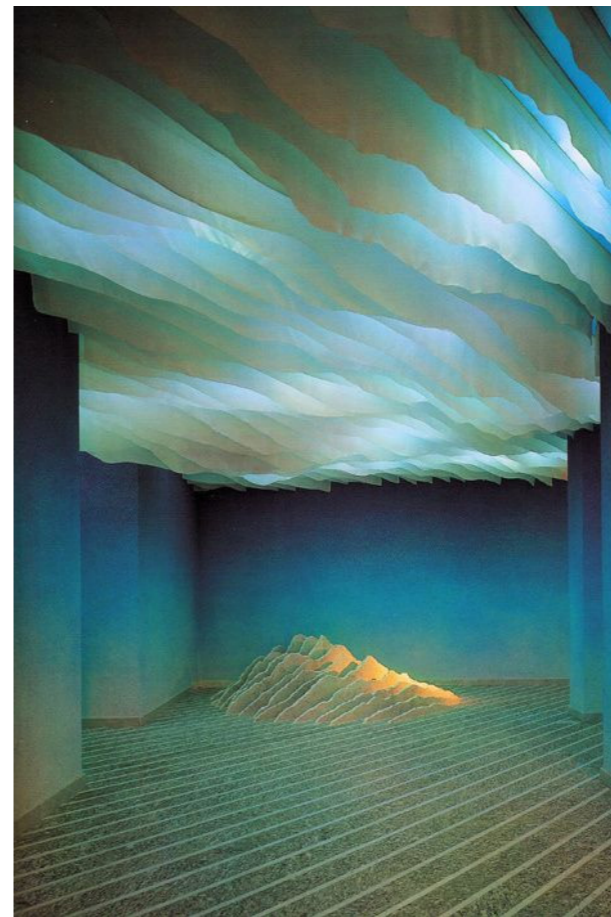
Mirazoz
Architects-of-Air



Poetic Cosmos of the Breath
Tomas Saraceno



Orsenigo chemollo
Toyo Ito & Associates



Residence au lac
Emilio Ambasz



Carlos Cruz-Diez

INFLUENCES



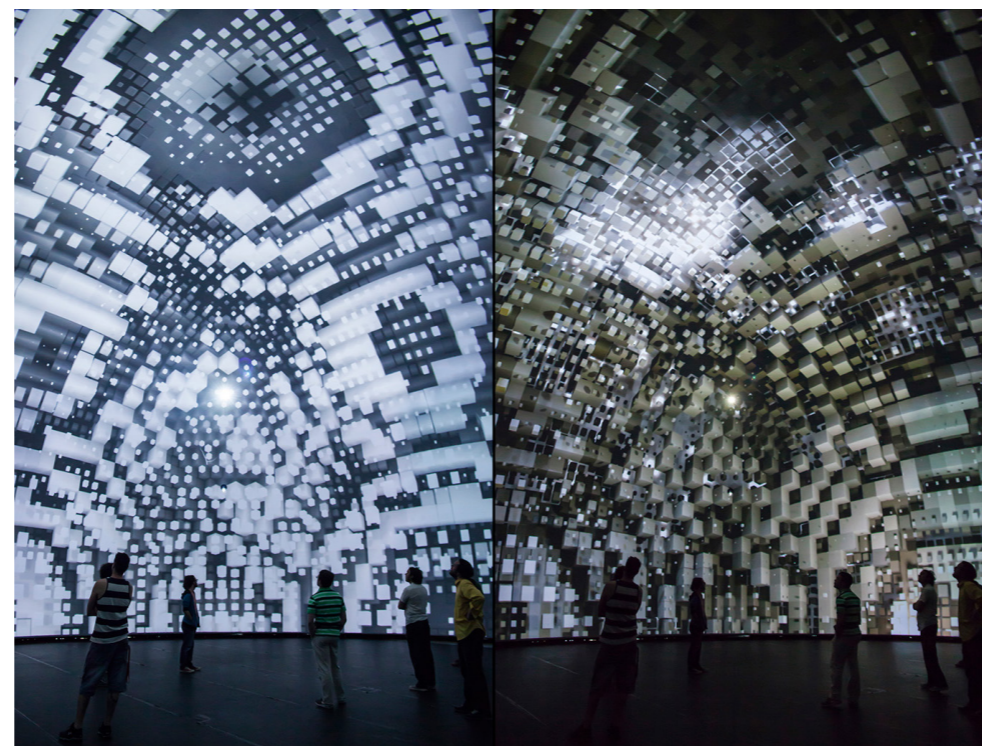
Orbit Pavilion



Fabric Prism
Pneuhaus



Infinity
Refik Anadol



Cocoon
Factory Fifteen



Sensing Spaces
Diébédo Francis Kéré

CHOIX CHROMATIQUE



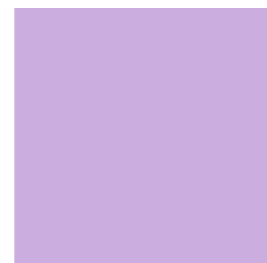
R = 228
V = 128
B = 128



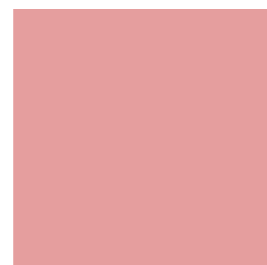
R = 128
V = 128
B = 215



R = 247
V = 208
B = 198



R = 206
V = 172
B = 222



R = 229
V = 158
B = 158



R = 157
V = 157
B = 198

TON BLEU

anti-stress
calmant
tranquillisant
relaxant

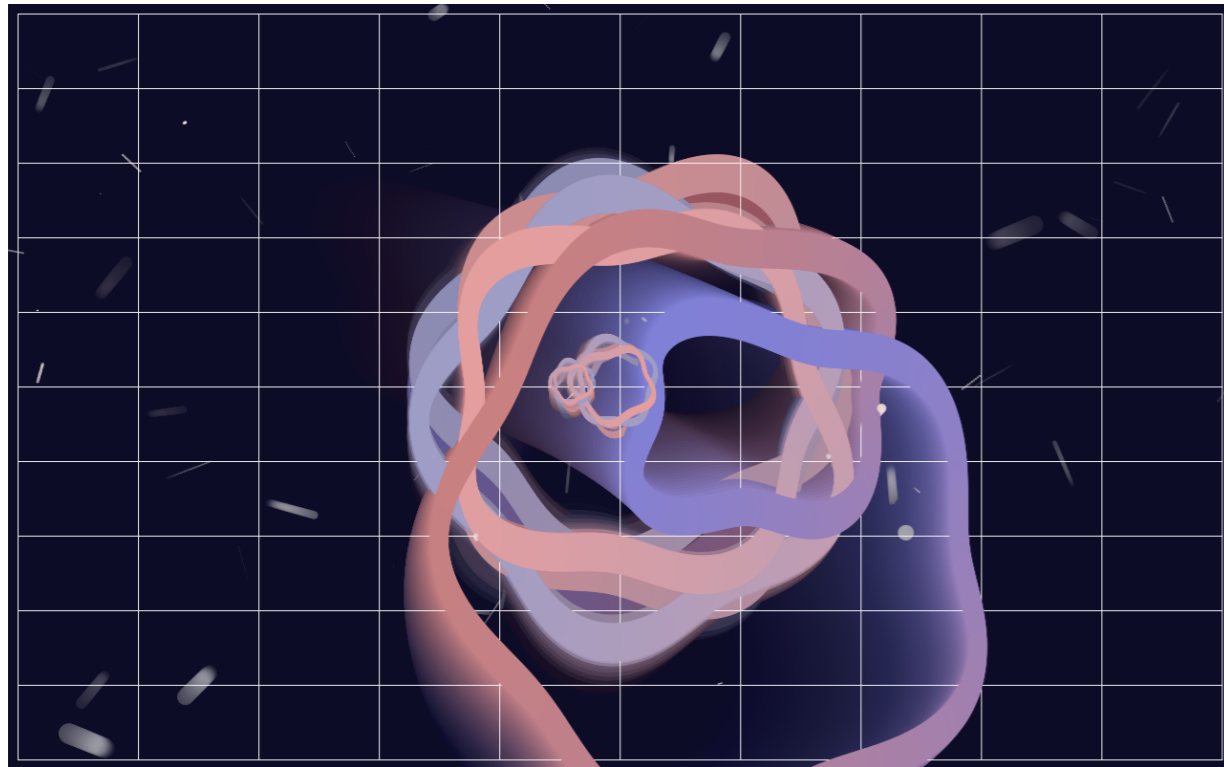
POURPRE ET VIOLET

nutriment psychique
immunostimulant
restructurant

TON ROSE

apaisant
rassurant

DISPOSITIFS

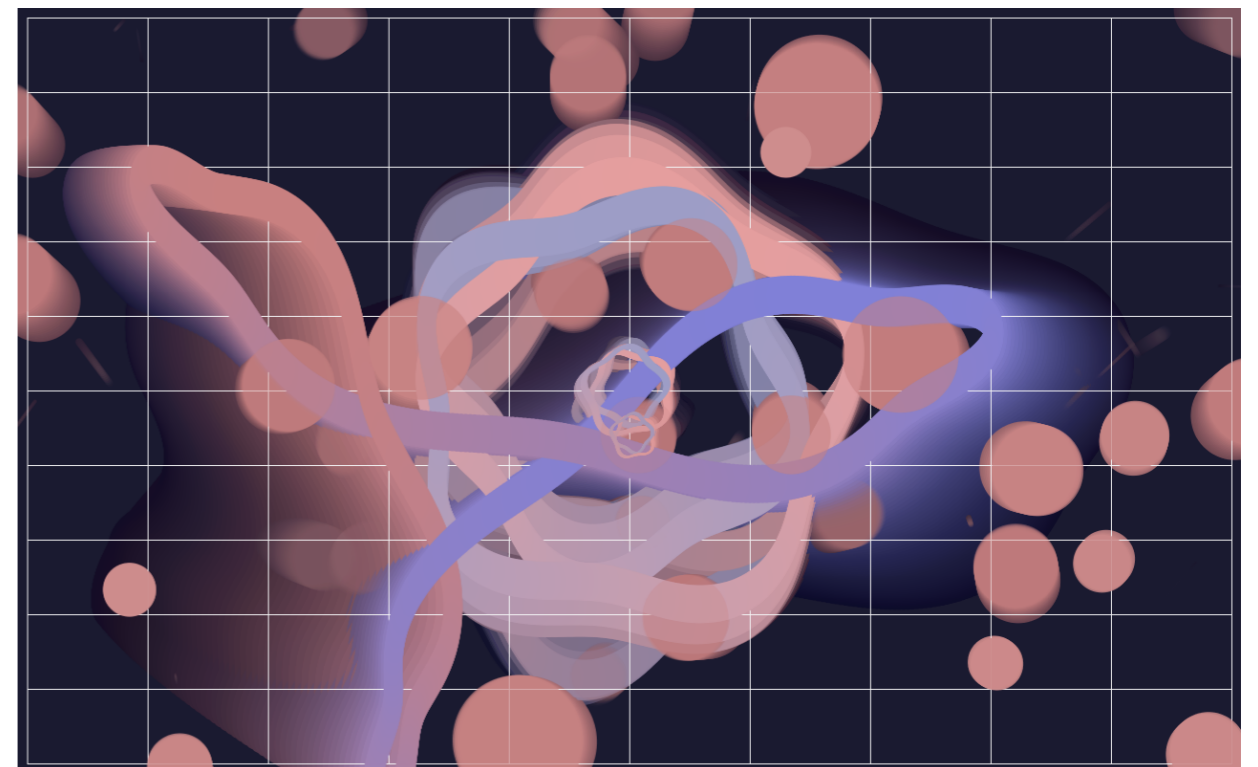
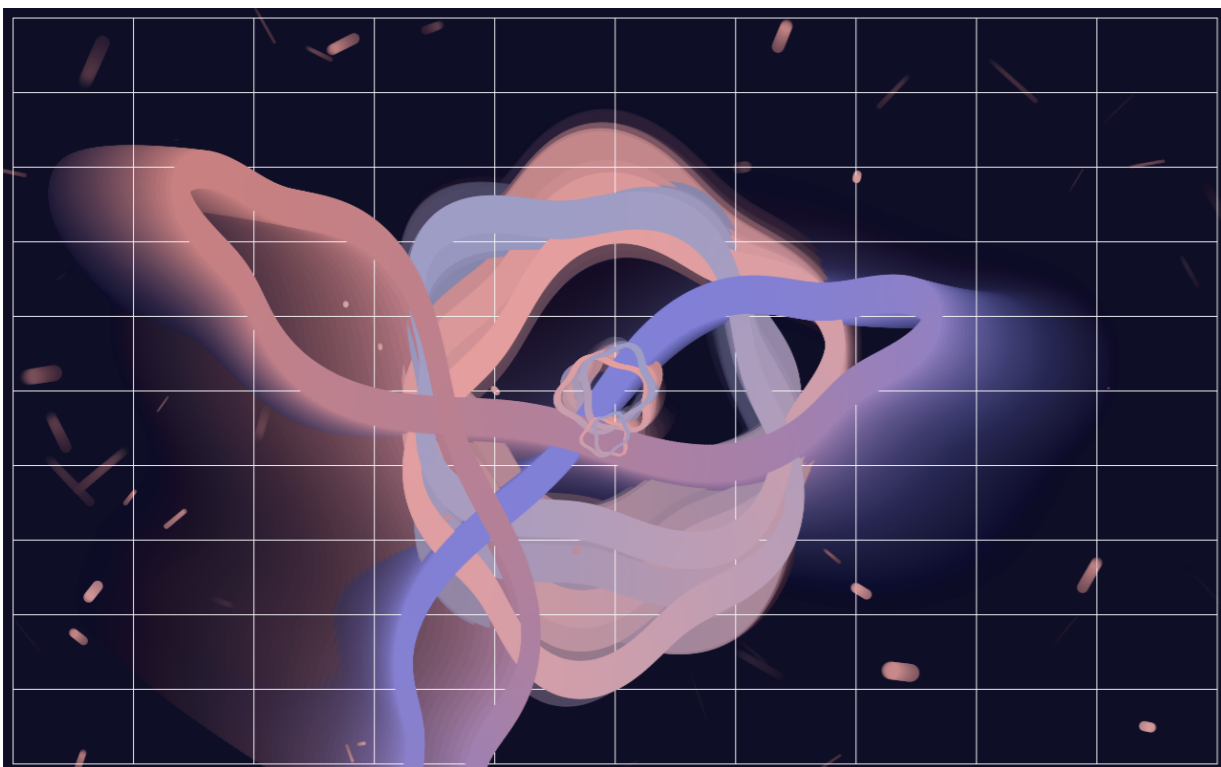
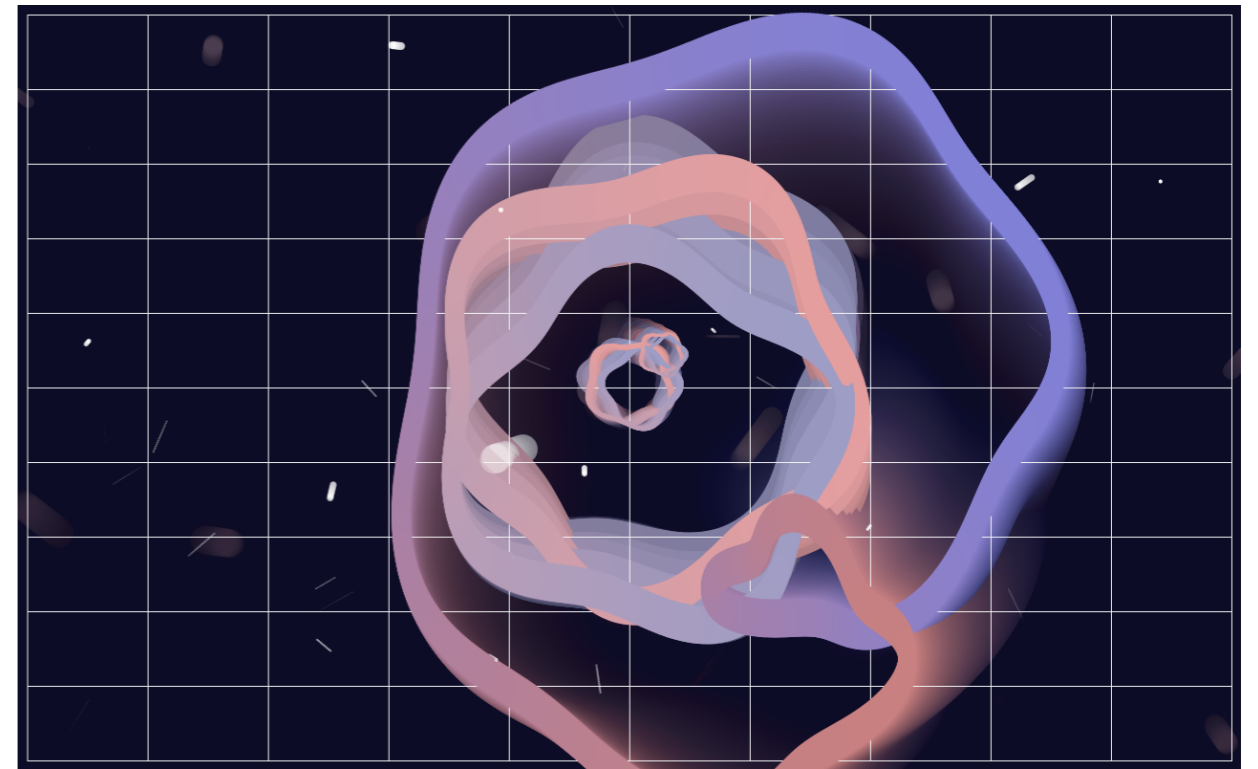


ESPACE IMMERSIF

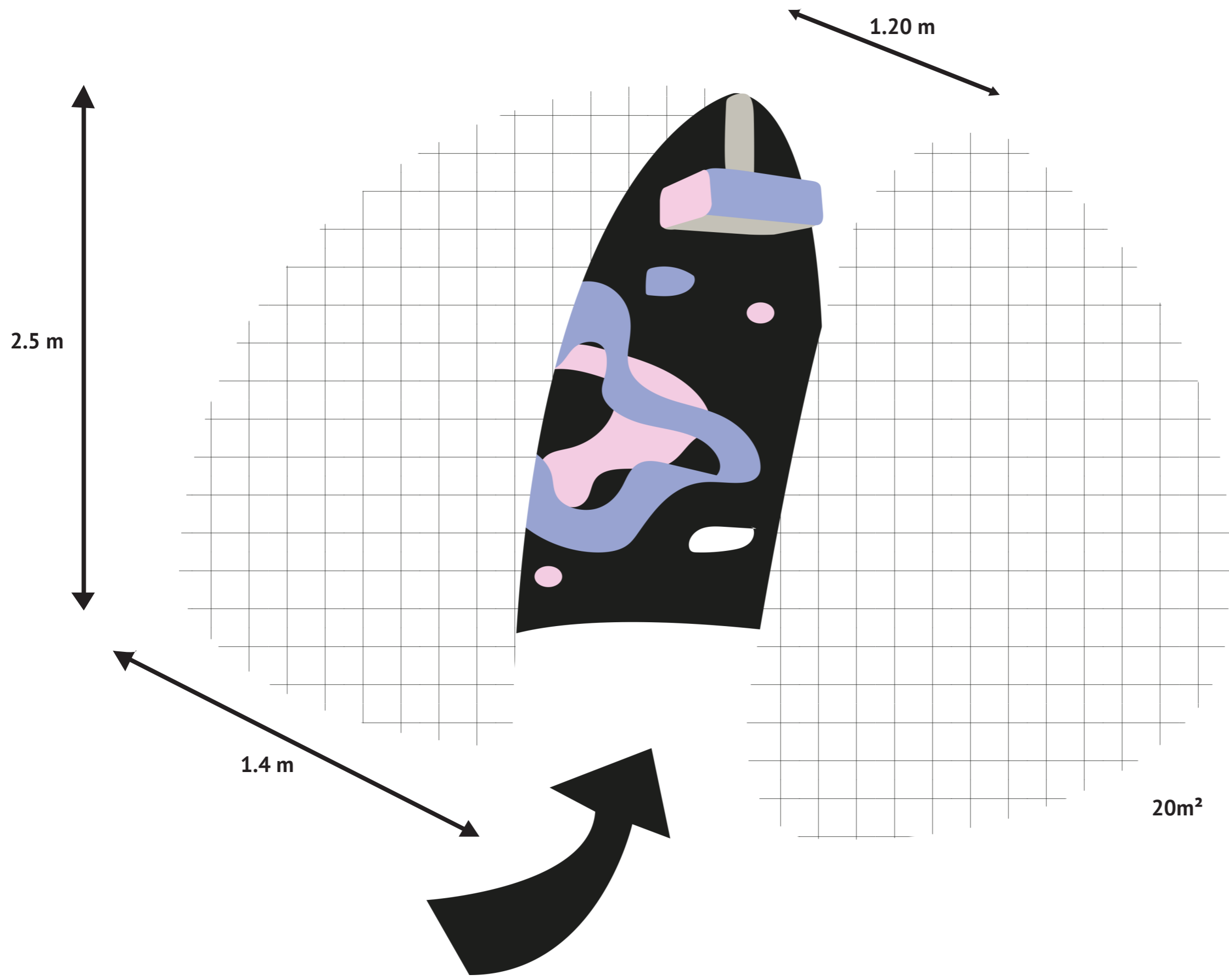
projection

motifs vaporeux
et évolutifs

ambiance apaisante

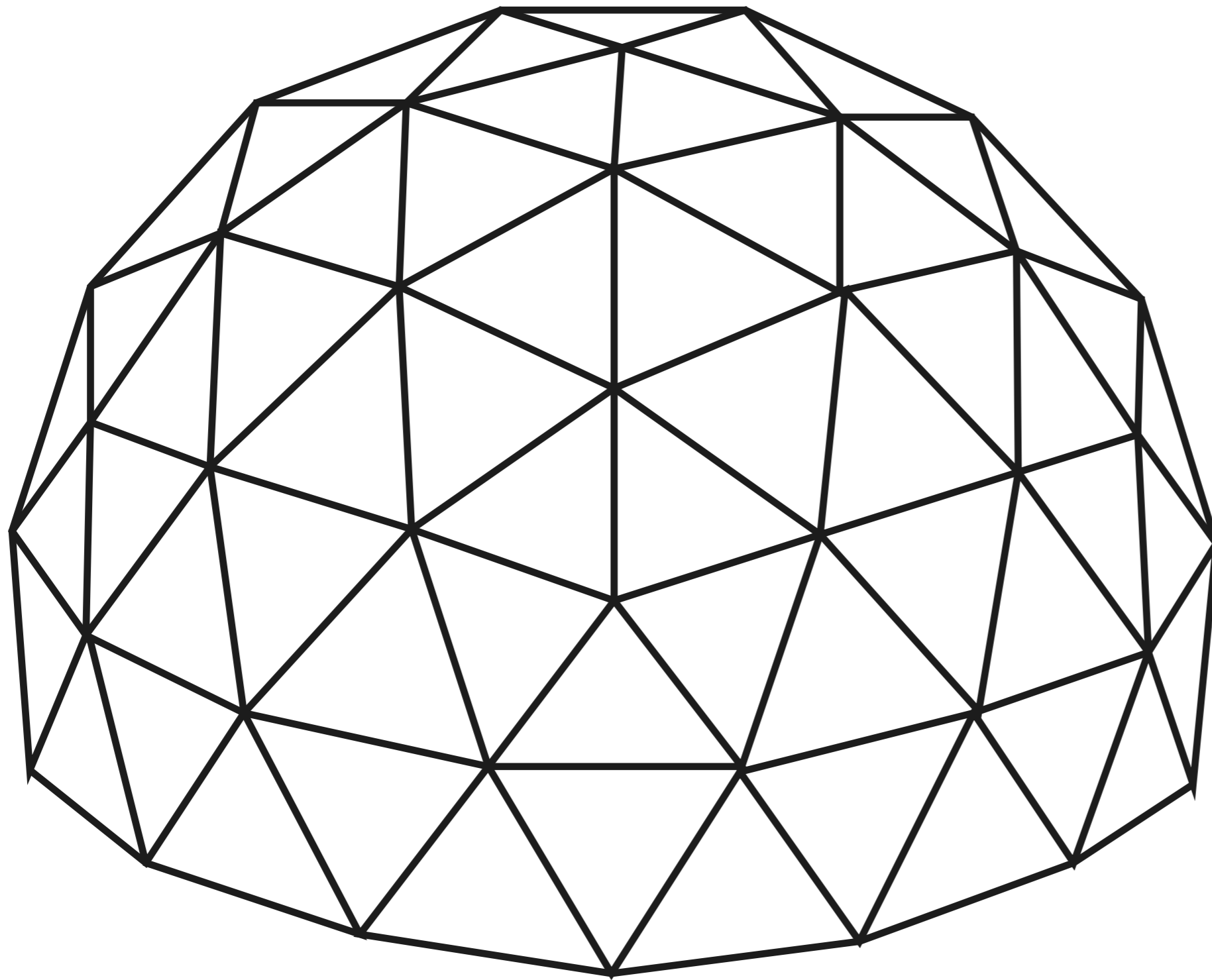


DISPOSITIFS



DOME
ESPACE
IMMERSIF
COCON

DISPOSITIFS



STRUCTURE

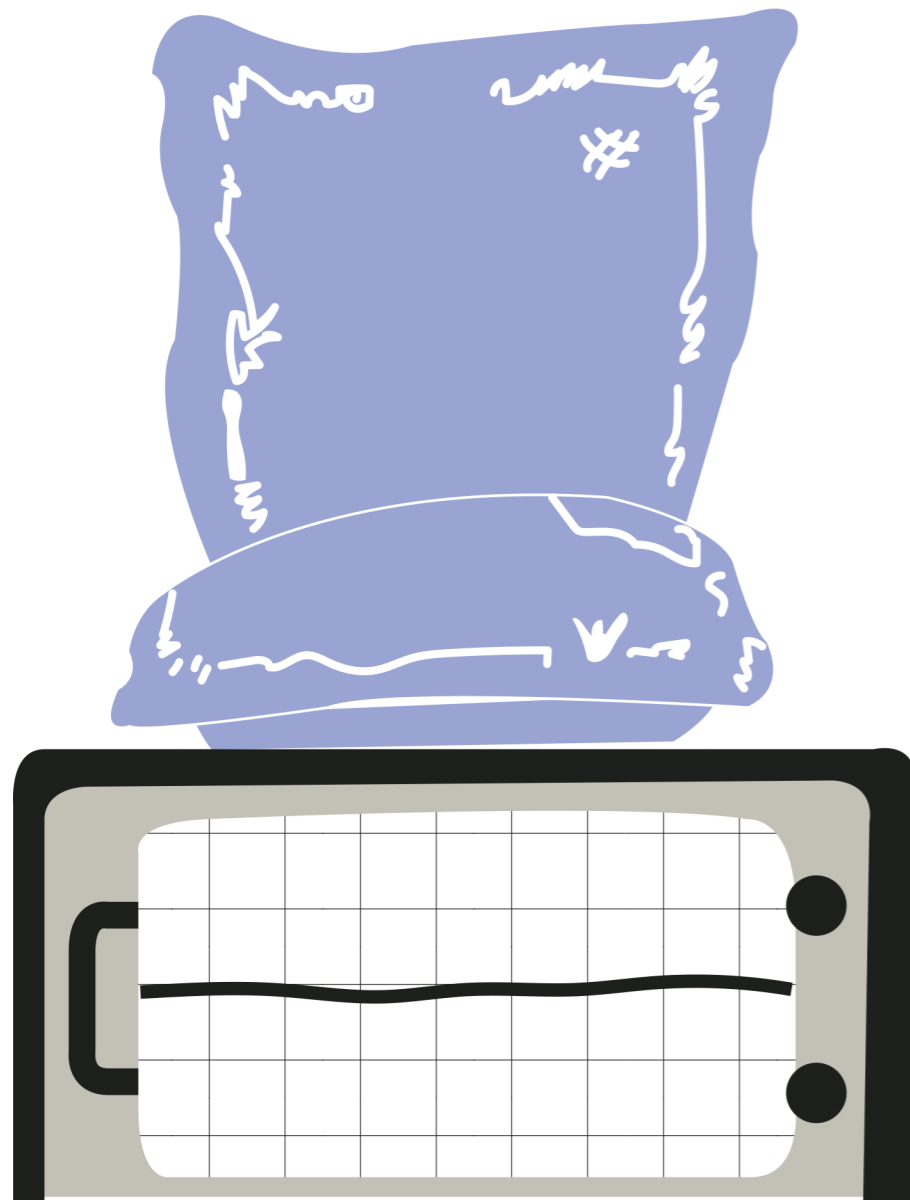
espace autoportant

perches reliées
par des connecteurs
recouverte
d'une toile tendue
ignifugée
par l'extérieur
et l'intérieur

peut être transporté
et réutilisé

dome divisé deux
en partie

DISPOSITIFS



Inspiré par le projet
de sofa
intelligent
du designer
Marco Gregori



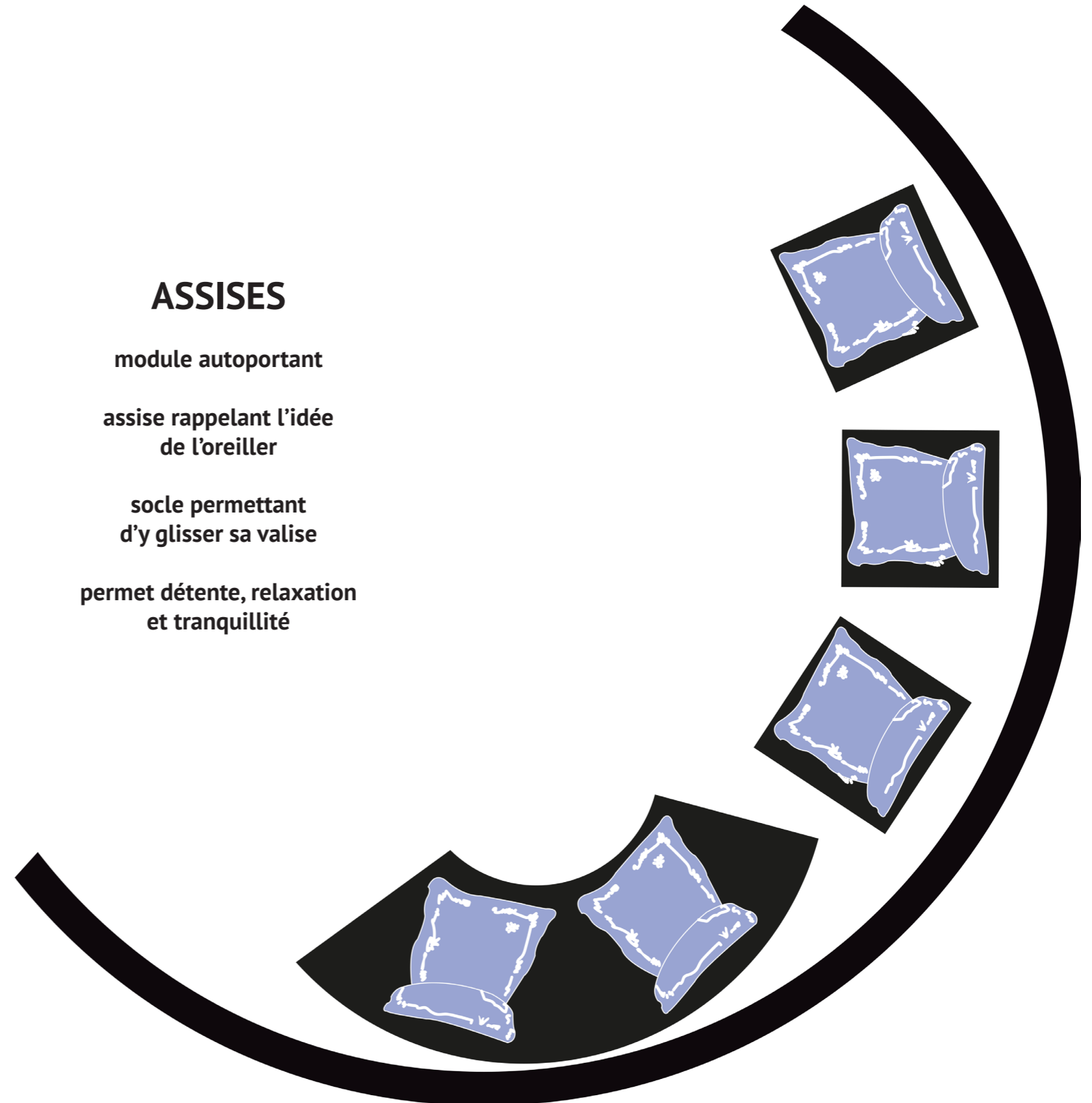
ASSISES

module autoportant

assise rappelant l'idée
de l'oreiller

socle permettant
d'y glisser sa valise

permet détente, relaxation
et tranquillité



ESCALE

